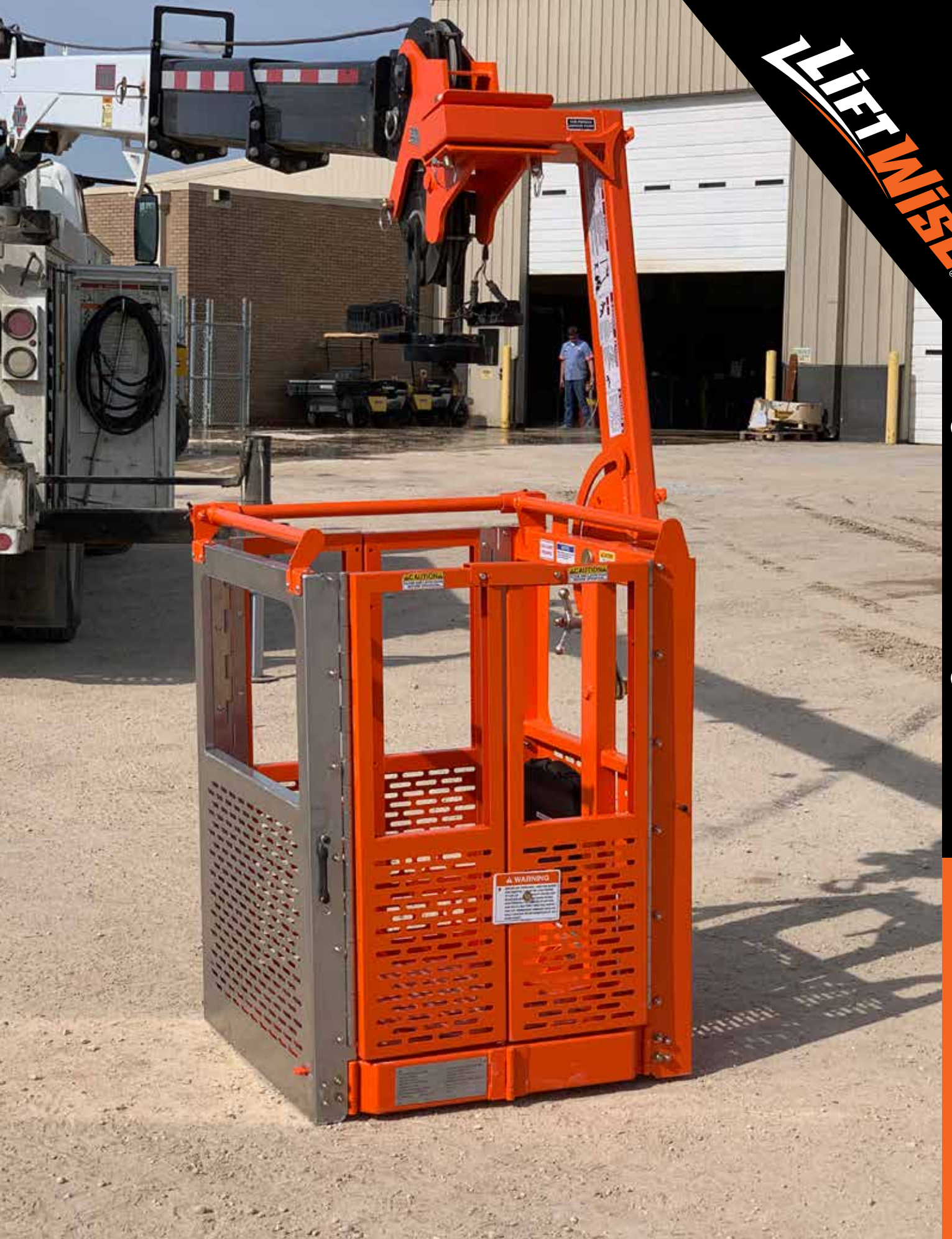


**LIFTWISE**<sup>®</sup>

Single Man Folding Basket



254-757-1177 | [sales@lift-wise.com](mailto:sales@lift-wise.com) | [lift-wise.com](http://lift-wise.com)

## SPECIFICATIONS

|               |                            |
|---------------|----------------------------|
| Load Capacity | 350 lb (159 kg)            |
| Dimensions    |                            |
| Open          | 40" x 30" x 45"            |
| Folded        | 30" x 19" x 45"            |
| Floor Space   | 30" x 30"                  |
| Attachment    | Crane Specific Adapter     |
| Weight        | 230 lb (104 kg)            |
| Folding       | Yes                        |
| Mounting      | Service Crane/Knuckle Boom |



## FEATURES

- Steel Construction to meet the rigors of contractors and utility/mine applications
- Provides Fall Arrest & Fall Protection
- Folds to reduce storage space
- Takes less than a minute to fold/unfold basket for more storage space
- Eliminates ladders or climbing on equipment

## OPTIONS

- Basket Carrier
- Basket Stand
- Slots in the floor to drain water
- Upset holes for skid resistance
- Space saving inward opening gates promote easy basket entry
- Meets or exceeds industry standards (ASME B30.5, ASME B30.22, ASME B30.23 & CSA Z150)



BASKET OF CHOICE



Material and specifications are subject to change without notice. Units in photos may include optional features. Contact a LiftWise representative for available options. LiftWise® and the LiftWise logo are registered trademarks of Fritel & Associates, LLC and may not be used without permission.  
© 2023 Diversified Product Development All Rights Reserved.



254-757-1177 | sales@lift-wise.com | lift-wise.com