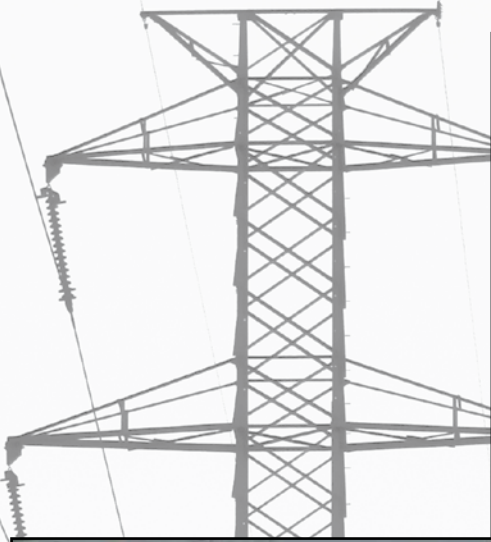


Rotating Man Basket



1200 lb
Capacity



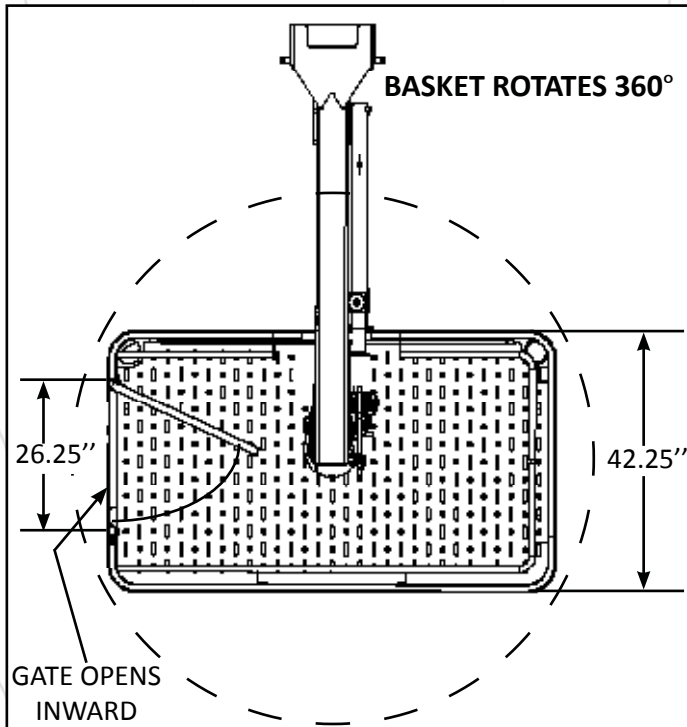
LIFTWISE[®]

by Diversified Products

254-757-1177

www.lift-wise.com

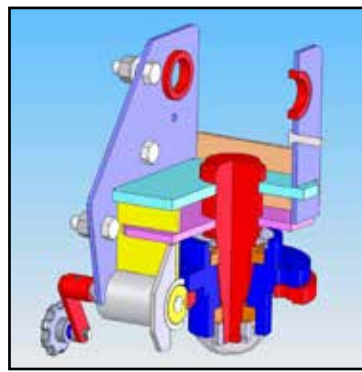
The next generation basket designed by engineers after many years of input from operators and field crews.



- Full-sized floor provides more space for men and materials - 21 square feet

Features and Benefits:

- Steel construction to meet the rigors of contractors and utility applications
- Assembly designed utilizing solid modeling and Finite Element Analysis
- Meets or exceeds industry standards
- Floor (42"x 72")
 - slots in floor to drain water
 - upset holes for skid resistance



ROTATOR

- High Capacity hub, spindle and bearings
- Self locking worm gear
- 360 ° Rotation
- EXTREMELY SERVICEABLE

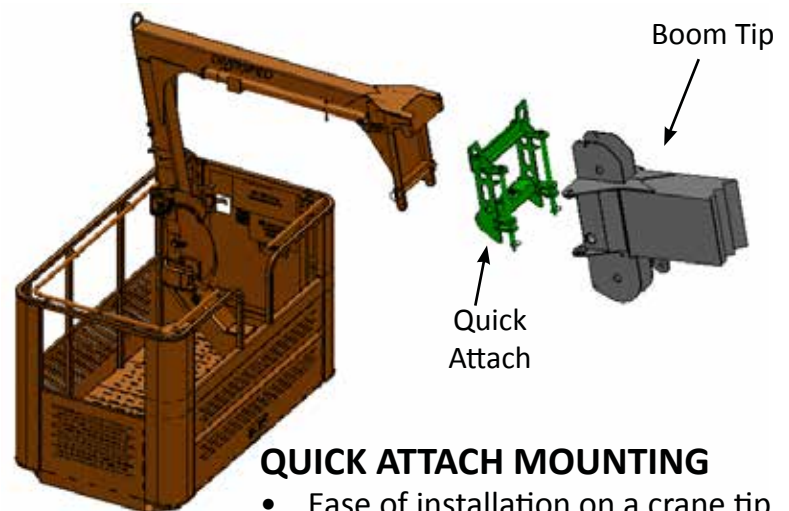
BRAKE

- High capacity caliper brake
- Heavy duty linkage
- Plated brake disc



ENTRANCE

- Heavy duty hinges with stainless steel pins provide long life
- Basket entrance has reinforcement for rugged applications
- Gate clearance to the floor provides added storage space



QUICK ATTACH MOUNTING

- Ease of installation on a crane tip
- Basket universal mounting permits installation on multiple cranes

1001 Webster Avenue
 Waco, TX 76706
 254-757-1177
 noahg@diversifiedproduct.com
 www.lift-wise.com

Contact Diversified for all your man basket needs. Yoke style 4', 6', single man, rotating and special requirements.

