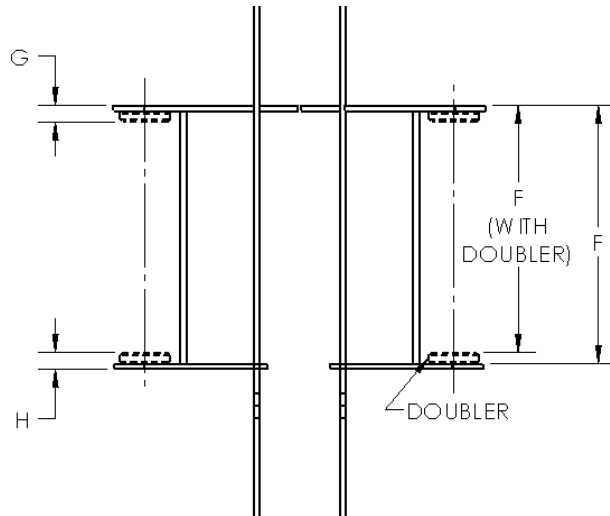
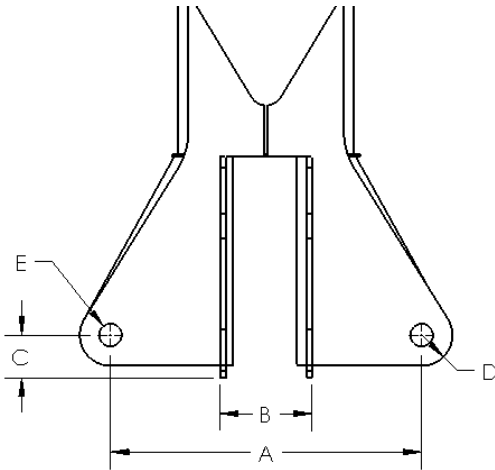


**BOOM TIP ADAPTER FORM**

Please fill out this form completely and include pictures of the top, sides, and end of the boom. When completed, send this form and pictures to [noahg@diversifiedproduct.com](mailto:noahg@diversifiedproduct.com) or fax to (254) 757-1188.

**NOTE: WITHOUT PICTURES, WE CANNOT GUARANTEE A PROPER FIT.**

COMPANY: \_\_\_\_\_ CRANE MAKE: \_\_\_\_\_  
 CONTACT NAME: \_\_\_\_\_ CRANE MODEL: \_\_\_\_\_  
 CONTACT PHONE: \_\_\_\_\_ CRANE SERIAL NO.: \_\_\_\_\_



- A \_\_\_\_\_ Distance from center to center of each hole
- B \_\_\_\_\_ Outside width of sheave opening
- C \_\_\_\_\_ Distance from center of hole to anything past jib ears
- D \_\_\_\_\_ Distance from center of hole to edge of jib ear
- E \_\_\_\_\_ Hole Diameter
- F \_\_\_\_\_ Distance from top of upper jib ear to top of lower jib ear. If the boom tip has doublers, then use distance from top of upper jib ear to top of lower doubler.
- G \_\_\_\_\_ Total thickness of upper ear (including doublers, if applicable)

**ADDITIONAL COMMENTS**

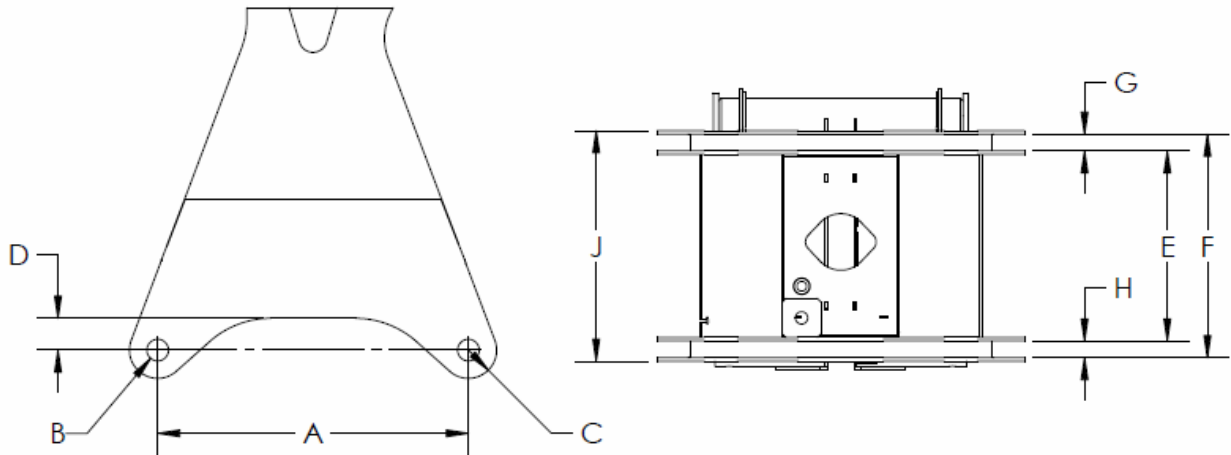
\_\_\_\_\_  
 \_\_\_\_\_  
 \_\_\_\_\_  
 \_\_\_\_\_  
 \_\_\_\_\_  
 \_\_\_\_\_

By **DIVERSIFIED**

Texas License No: F-9655

H \_\_\_\_\_ Total thickness of lower ear (including doublers, if applicable) \_\_\_\_\_

**JIB MEASUREMENTS**



- A \_\_\_\_\_ Distance from center to center of each hole
- B \_\_\_\_\_ Hole Diameter
- C \_\_\_\_\_ Distance from center of hole to edge of jib ear
- D \_\_\_\_\_ Distance from center of hole to edge
- E \_\_\_\_\_ Distance between top of second ear and bottom of third ear
- F \_\_\_\_\_ Distance between bottom of top ear and top of bottom ear
- G \_\_\_\_\_ Distance between top set of jib ears
- H \_\_\_\_\_ Distance between bottom set of jib ears
- J \_\_\_\_\_ Overall distance of ears top to bottom

**ADDITIONAL COMMENTS**

\_\_\_\_\_

\_\_\_\_\_

\_\_\_\_\_

\_\_\_\_\_

\_\_\_\_\_

\_\_\_\_\_

\_\_\_\_\_

\_\_\_\_\_